



# Welcome to LOCAL DISTRICT C

From the Office of  
Local District Central  
Superintendent  
Frances Baez

Greetings Leaders of Learning and Achievement,



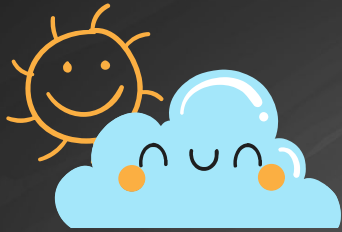
This week has been remarkable! We have concluded a full month of face-to-face school returns in our Early Education Centers through 12th grade settings. I congratulate all of you for this great accomplishment. This return made it possible to highlight an important milestone for our High School Seniors. We ended the month with an exclamation mark as we celebrated College Signing Day throughout our local district. It was great to attend your virtual and face-to-face events and congratulate students who have made a commitment to the college of their choice. This is a rewarding time for school communities!

Principal Appreciation Day is May 1, 2021! I want to emphasize my appreciation for you and your leadership, especially during these trying times. Your unwavering commitment will be remembered for years to come for showing relentless leadership for students and parents during a world-wide pandemic.

As you experience success towards improving student outcomes, don't forget to tweet and tag our new handle **#LDCChampionMentality** :)

In Community,  
Frances Baez

# Local District Central Teacher Appreciation



Celebration of Teachers MAY 3-7

11:15 A.M.-12:00 P.M.

Join us & hear from our guest presenters!

Please share this flyer with your teachers



## DISTRICT UPDATES

Update/News/Announcements	Information Link	Contact
<b>Interoffice Correspondence: State Assessment and ELPAC Extension updates</b>	<a href="#"><u>IOC regarding State Testing</u></a> <a href="#"><u>IOC regarding ELPAC</u></a>	
<b>Leading Social Emotional Learning:</b> Participants will have the opportunity to deepen their understanding of Social-Emotional Learning (SEL) Leadership to proactively engage and support positive school cultures. Participants will explore how SEL can assure equitable outcomes for all learners. See flyer for more information.	<a href="#"><u>Flyer</u></a>	Susan Ward-Roncalli sroncall@lausd.net or Dr. Marco Nava mnava@lausd.net.



# Principals' Communication Update

April 30, 2021

Click on this link to download LD Central's Principals' Communication slide deck, as a PDF

UNITS	
<a href="#"><u>SCHOOL MENTAL HEALTH</u></a>	<a href="#"><u>SYSTEMS OF SUPPORT</u></a>
<a href="#"><u>OPERATIONS</u></a>	<a href="#"><u>SPECIALIZED STUDENT POPULATIONS</u></a>
<a href="#"><u>PAGE</u></a>	<a href="#"><u>SPECIAL EDUCATION</u></a>
<a href="#"><u>PUPIL SERVICES &amp; ATTENDANCE</u></a>	

INSTRUCTION			
<a href="#"><u>DATA</u></a>	<a href="#"><u>ENGLISH LANGUAGE ARTS (ELA)</u></a>	<a href="#"><u>ENGLISH LANGUAGE DEVELOPMENT (ELD)</u></a>	<a href="#"><u>MATH</u></a>
<a href="#"><u>SCIENCE (STEAM)</u></a>	<a href="#"><u>DUAL LANGUAGE</u></a>	<a href="#"><u>TITLE ONE</u></a>	<a href="#"><u>COUNSELING &amp; A-G</u></a>
<a href="#"><u>KINDERGARTEN READINESS</u></a>	<a href="#"><u>EARLY EDUCATION</u></a>	<a href="#"><u>SCHOOL SUPPORT</u></a>	





# *Welcome to* LOCAL DISTRICT C

Administrator of Operations  
**Miguel Saenz**

Greetings Local District Central Champions,



I want to commend all of our Local District Central Leaders for all the great work you have done to welcome our students back on campus. Every day you have demonstrated your champion qualities as you complete the many activities required to keep our families and communities safe and learning. Thank you for your hard work and dedication.

You are my Heroes!

In Gratitude,

Miguel Saenz

## Updates/Events/News:

### Graduation/Culmination Guidance

In-person graduation and culmination ceremonies are back! The attached Interoffice Correspondence provides schools with guidance to plan in-person, outdoor graduation and culmination ceremonies for the class of 2021. Please be sure to plan carefully as there are many protocols to celebrate in a safe manner while limiting the spread of COVID-19. The IOC also includes ideas for alternatives to in-person celebrations. Please review the attached and contact your Operations Coordinator if you need assistance.

### Teacher and Substitute Teacher Appreciation Week

National Teacher and Substitute Appreciation Week takes place from May 3-7th. The LAUSD Board of Education would like to recognize teachers for their essential contributions of providing students with quality education programs across the District.

Be it helping them with their studies or guiding them towards the right career path, teachers are the most helpful and guiding star for any student.

## Links:

[Interoffice Correspondence](#)



CONTINUED...



# OPERATIONS

Miguel Saenz, Administrator of Operations



## Updates/Events/News:

### Staff Relations Dates and Reminders

#### Important Dates:

- May 15, 2021 Displacement Notices due to HR
- May 21, 2021 Notification of Teacher Tentative Assignment for 2021-2022 school year

#### Upcoming Evaluation Dates:

- May 11, 2021 Evaluation Issuance deadline for Single Track UTLA Represented Employees
- May 11, 2021 Evaluation Issuance deadline for Assistant Principals\*
- May 15, 2021 Evaluation Issuance deadline for Principals\*
- May 19, 2020 Evaluation Issuance deadline for B-Basis Single Track Employees
- May 25, 2021 Evaluation Issuance Deadline for Directors and Community of Schools Administrators\*

\*Per AALA/LAUSD side letter dated June 8, 2020 (see Attachment #1 for comprehensive evaluation timelines)

#### Sideletter Agreements

Sideletter agreements for THE PHYSICAL REOPENING OF SCHOOLS and for SPECIAL EDUCATION AND ITINERANT STAFF have been reached between LAUSD and UTLA. Click [here](#) to access all Sideletter agreements. See Attachment #2 for FAQs related to school reopening.

[Attachment 1](#)

[Attachment 2](#)

CONTINUED...

## Updates/Events/News:

## Links:

### Staff Relations Dates and Reminders (con't)

#### Tentative Matrix Process – Spring 2021

Before initiating the Matrix process for the 2021-2022 school year, school sites should finalize their budgets and Single Plans for Student Achievement (SPSA) with input from the appropriate councils. Finalize Coordinator/Coach/Dean Confirmation/Elections before matrix and preference forms are distributed. Distribute matrix and preference forms via email no later than April 23, 2021 (approximately four weeks prior to posting tentative assignment on May 21, 2021). All iterations of your matrix should be labeled "TENTATIVE" as changes in enrollment, etc., may result in changes to your matrix. Assign and post Tentative Teacher Assignments no later than May 21, 2021 (21 calendar days before the end of the school year). See Attachment #3 for additional information.

#### Below Standard Evaluations

"When a Final Evaluation Report is marked "Below Standard," the evaluator shall specifically describe in writing the area(s) of below standard performance, together with recommendations for improvement, and the assistance given and to be given." (Article X, Section 6.0) The written description is known as the BSE Attachment. Your Staff Relations Field Director will provide you with a template. The completed document is attached to the evaluation and uploaded to the EGDC platform. If you plan to issue a BSE, notify the person in writing at least five days prior to the scheduled meeting and inform them of their right to have a representation at the meeting.

[Attachment #3](#)

CONTINUED...

## Updates/Events/News:

## Links:

### Staff Relations Dates and Reminders (con't)

#### COVID Testing Requirements

Employees who report to District sites to perform their work duties are expected to participate in the District's COVID-19 Testing Program on a weekly basis. Information on the program and scheduling testing appointments may be found at <https://achieve.lausd.net/covidtesting>. Employees with questions regarding the testing program may contact (213) 241-2700. For questions regarding employee compliance with these procedures please contact your Staff Relations Field Director or Senior Human Resources Representative.

#### Refusing to Test for COVID

Guidance for administrative responses to employees who refuse to be tested for COVID may be found in "Guidance – Employees Refusing to COVID Test" dated December 2, 2020 (Attachment #6). Meetings may be conducted face-to-face, by Zoom, or by telephone. Contact your Staff Relations Field Director or Sr. HR Representative for assistance.

[Attachment 6](#)

## Updates/Events/News:

### Reminders

#### Fiscal Updates

To ensure that the cost of goods and/or services ordered is posted to the current fiscal year (2020-2021), transactions must have an **APPROVED** status in the SAP Procurement System by the dates indicated below:

#### Cut-off Dates For All SAP Transactions:

TRANSACTION TYPE FOR SCHOOLS AND OFFICES (NON-TITLE I)	
Shopping Cart for Non-Stock Purchases – \$25,001 to \$96,700	4/30/2021
Low Value Purchase Orders for Goods/Services – Up to \$25,000	5/7/2021 (8:00 pm)
Shopping Cart for Book and Instructional Materials Orders	5/19/2021
Shopping Cart for Book Orders - State Adopted	5/19/2021

CONTINUED...

## Updates/Events/News:

### Fiscal Updates (con't)

#### Cut-off Dates For All SAP Transactions:

TRANSACTION TYPE FOR SCHOOLS AND OFFICES (NON-TITLE I)	
P-Card Purchases**	5/28/2021
Travel Request Entries into SAP	5/28/2021
Schools – Submission of all Other Budget Adjustments for Review and Approval	6/10/2021
Travel Claim Reimbursement Requests (completed and approved with supporting documentation)	6/11/2021
P-Card Reconciliations***	6/11/2021
Toshiba Ghost Account Reconciliation***	6/11/2021 (Schools) 6/18/2021 (Offices)
Imprest Fund Claim Reimbursement Requests	6/11/2021 <b>CONTINUED...</b>

## Updates/Events/News:

## Links:

### Technology Reminders

#### Student Learning Device Requests (iPads, Chromebooks, or Windows Laptops)

If your inventory has been updated and you are requesting devices, please fill out the Google Form. Your school inventory will be assessed and depending upon whether your school has a deficit or surplus, the LD will determine best use of the limited resources and will allot as needed. Please ensure your inventory is completely updated and accurate in Remedy. If students or staff are experiencing technical difficulties with their devices they may contact the ITD Helpdesk at 213-241-5200 for assistance.

#### Important Hotspot Update: Zero-Use Hotspots

Students need hotspots. We are aware of hundreds of hotspots that have not been used in the last 3 months. Please ask your IDM to reach out to the students who are not using their hotspot and request that they be returned to the school site. If you don't need recovered hotspots, please contact your operations coordinator and we will coordinate pick up from your school and redeploy to other sites as needed.

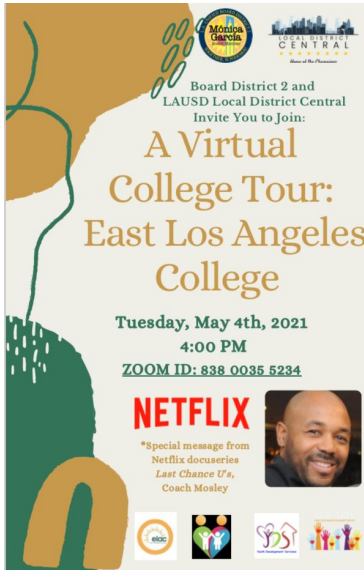

#### Computing Device Refresh Program:

Each year, the IT Asset Management Team evaluates the need to refresh each school's inventory of viable computing devices (i.e., Chromebooks, iPads, laptops) to ensure every student is ready to participate successfully in online/hybrid instruction. Please see the attached IT Asset Management March Newsletter with all the information you need to be ready for the Refresh Program.

[Google Form](#)

[March Newsletter](#)



Updates/Events/News:	Dates:	Links:
<p>ELAC Virtual Tour BD 2 Invites you to join: A Virtual College Tour: ELAC</p>  <p>Board Member Monica Garcia, &amp; ELAC Leadership Academy LAUSD Foster Your Students 9TH-12TH Grade</p>	<p>Tuesday, 5/4/21 @4:00 PM</p> <p>3:00-4:00 pm May 6 May 13 May 20</p>	<p>ZOOM ID: 838 0035 5234</p>  <p>ZOOM ID: 844 6935 4749</p>






# PACE

Theresa Arreguin, Parent and Community Engagement Administrator



Updates/Events/News:	Dates:	Links:
<b>LD Central Community of Schools Town Hall ALL</b>	<u>5:00-6:00 pm</u> <b>May 6, 2021</b>	<b>ZOOM LINK:</b> <a href="https://lausd.zoom.us/j/84563235565">https://lausd.zoom.us/j/84563235565</a>
<b>TOWN HALLS: Save the Date</b> Asian American & Pacific Islander Community Town Hall Series <ul style="list-style-type: none"> <li>Korean Community</li> <li>Filipino Community</li> <li>Japanese Community</li> <li>Chinese Community</li> </ul>	<u>5:00-6:00 pm</u>  <b>Monday, May 10</b> <b>Thursday, May 20</b> <b>Tuesday, May 25</b> <b>Tuesday, June 1</b>	<b>ZOOM LINK:</b> <a href="https://lausd.zoom.us/j/81280360292">https://lausd.zoom.us/j/81280360292</a>
<b>Black Students Matter: We See You, We Hear You Town Hall</b>	<u>5:00-6:00</u> <b>May 17</b>	<a href="https://lausd.zoom.us/j/81902015809">https://lausd.zoom.us/j/81902015809</a>
<b>Tech Talks &amp; More Continues</b> <ul style="list-style-type: none"> <li>An Overview of Dual Language Programs</li> <li>Nutrition</li> </ul>	<u>3:00-4:00 pm</u> <b>Wed. May 5th</b>  <b>Frid. May 7th</b>	<b>ZOOM LINK:</b> <a href="https://lausd.zoom.us/j/95673676024">https://lausd.zoom.us/j/95673676024</a>

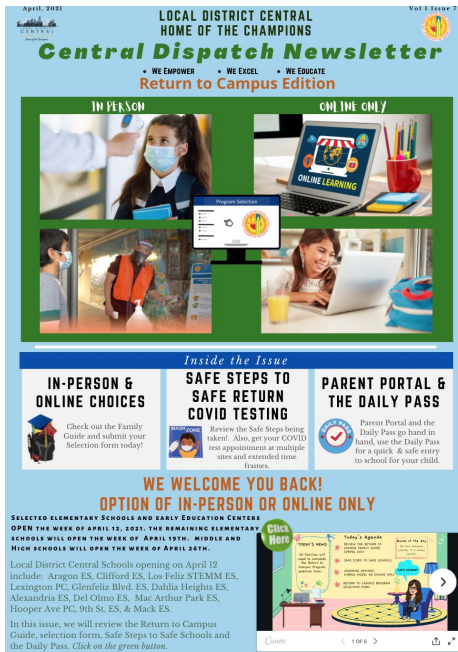
Updates/Events/News:	Dates:	Links:
<p><b>IN PARTNERSHIP WITH BOARD MEMBER GARCIA, LACC, &amp; CSULA:</b></p> <p><b>ELEMENTARY SCHOOLS IN BD 2!</b></p> <p>Starf, parents and kindergartners are Invited to the Celebrate the Class of 2033. Come celebrate your kindergartners as LACC and CSULA join us to this educational success for Kindergarteners!</p>	<p>3:30 PM-4:30 PM Thursday, May 13, 2021</p>	<p>ZOOM LINK: <a href="https://LAUSD.ZOOM.US/J/89002332113">HTTPS://LAUSD.ZOOM.US/J/89002332113</a></p> <div>   </div>

Updates/Events/News:	Links:
<p>Volunteer Program NEW GUIDE TO VOLUNTEERING IN LOS ANGELES UNIFIED: VIRTUAL AND ON-CAMPUS</p> 	<p><a href="https://achieve.lausd.net/cms/lib/CA01000043/Centricity/domain/633/volunteer%20program/Guide%20to%20Volunteering%20Eng%20V2.pdf">https://achieve.lausd.net/cms/lib/CA01000043/Centricity/domain/633/volunteer%20program/Guide to Volunteering Eng V2.pdf</a></p>

## Updates/Events/News:

### LDC Newsletter

### RETURN TO CAMPUS EDITION



## Links:

English Link:

<https://tinyurl.com/2r6ty72j>

Spanish Link:

<https://tinyurl.com/ypfm3a5e>

# SPECIAL EDUCATION

**Yolanda Bueno**, Special Education Administrator

Updates/Events/News:	Dates:	Links:
<p>We recently started to welcome back our students to campuses and it has proven to be no easy feat. the Division of Special Education continues to provide us guidance. As students are returning we are also fine tuning and follow up with more specialized supports. Students with Aerosolized Generating Procedures, that usually have a Health Care Assistant to conduct the protocols should still be on Distance Learning. The DSE is developing a re-entry plan in conjunction with the Mask Accommodation/ Exemption Process. If you are concerned about a student please don't hesitate to reach out to the LRE or myself.</p> <p>The purpose of the Mask Accommodation/Exemption process is to help us determine the root cause of the challenge to wearing a mask. These root causes include 1. Risk of obstructed breathing. 2. Inability to remove face mask without assistance. 3. Inability to present choking, drooling or excessive saliva production on the mask. 4. Diagnosis of medical/ respiratory condition. 5. Sensory issues. 6. Other reasons. After determining the root cause, a school team comprised of the administrator, teacher, parent and school nurse should meet to find accommodations to help the student wear a mask. If a student is unable to wear a mask, he/she should not be cohorted with any other students.</p>	<p>4/14/2021</p>	<p>Mask Accommodation/Exemption Process</p> <p><a href="https://drive.google.com/file/d/1Rwn3B0vDpgMUozY1WrGTxyafU8BrW9je/view?usp=sharing">https://drive.google.com/file/d/1Rwn3B0vDpgMUozY1WrGTxyafU8BrW9je/view?usp=sharing</a></p>

# SPECIAL EDUCATION

**Yolanda Bueno**, Special Education Administrator

Updates/Events/News:	Dates:	Links:
<p><b><u>Hybrid RSP Support Network</u></b></p> <p>In order to support schools maximize in person instruction for students receiving RSP services, the Program Specialists are holding weekly Hybrid RSP Support Network meetings. During this time we group RSP teachers by level alike to review sample schedules, maximize paraprofessional support to students, service track, problem solve through challenges and celebrate successes. Meetings take place on Wednesdays from 3-4 p.m.</p> <p>Help us spread the word. We are here to support.</p> <p>Join Zoom Meeting</p> <p><a href="https://lausd.zoom.us/j/81259485067?pwd=cZ2cjBWOWZJMXl4N21JYW1vTHgxUT09">https://lausd.zoom.us/j/81259485067?pwd=cZ2cjBWOWZJMXl4N21JYW1vTHgxUT09</a></p> <p>Meeting ID: 812 5948 5067</p> <p>Passcode: 096943</p>	<p>Every Wednesday from 3-4 p.m.</p>	<p>Hybrid Network meetings</p> <p><a href="https://drive.google.com/file/d/1ax9Vycl51uxXz02C3Fm23yP4-EtVpaxm/view?usp=sharing">https://drive.google.com/file/d/1ax9Vycl51uxXz02C3Fm23yP4-EtVpaxm/view?usp=sharing</a></p>

## Updates/Events/News:

Welcome back to campus! Please see the attached resources for community building activities suitable for all grade levels.

## Links:

[https://drive.google.com/file/d/1hdB4Bg4y-X1bm8amxGYM\\_fajKaDrEiCB/view?usp=sharing](https://drive.google.com/file/d/1hdB4Bg4y-X1bm8amxGYM_fajKaDrEiCB/view?usp=sharing)

<https://drive.google.com/file/d/1va6Tnkm4ZVuWGUxXVjbQdgRYI7f1jLol/copy>

<https://drive.google.com/file/d/1GOrb9yYRmW6yWyCijKXv4KusCgFVVM67/copy>



# SCHOOL MENTAL HEALTH

Myrna Reynoso Torres, School Mental Health Field Coordinator

Anne-Marie Gauto, SMH Specialist

## Updates/Events/News:

### May is Mental Health Awareness Month!

Mental health is essential to everyone's overall health and well-being, and mental illnesses are common and treatable. The COVID-19 pandemic has had profound impacts on the mental health of people of all ages, and now more than ever it is critical to reduce the stigma around mental health struggles that commonly prevents individuals from seeking help.

**Student Voice Highlight:** Last week at our Student Voice Conference we had an opportunity to hear from three student advocates for Mental Health: Cesia Paxtor Gonzalez (Contreras HS, BT), Camila Delacerda (Roybal HS), and Holly Rahman (NOW Academy). These students presented on *"Building Your Mental Wellness."* The students did an amazing job presenting to their peers on the importance of building mental wellness and increasing resiliency. Please see the attached link for their presentation.

## Links:

[Building Your Mental Wellness- Student Voice](#)


[Building Your Mental Wellness-Resources](#)



CONTINUED...

# SCHOOL MENTAL HEALTH

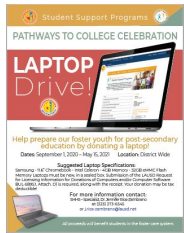

**Myrna Reynoso Torres**, School Mental Health Field Coordinator

Updates/Events/News:	Links:
<p><b>May is Mental Health Awareness Month! <i>Continued</i></b></p> <p>During the month of May our PSWs will be curating resources and promoting Mental Health Awareness Campaigns. These campaigns are an opportunity for schools to increase awareness around common mental illnesses, symptoms students may be facing, and reduce the stigma related to mental illness.</p> <p>PSW, Stephanie Samaniego from Carver MS will be hosting <i>Wellness Talks</i> to promote Mental Wellness with her students.</p> <p>For resources on how to promote Mental Health Awareness Month at your school, please see the Mental Health Awareness Toolkits form Each Mind Matters or Mental Health America.</p> <p>For more information on how to support students' and staff mental health, please contact Myrna Reynoso Torres, LD Central Coordinator at <a href="mailto:myrna.reynosotorres@lausd.net">myrna.reynosotorres@lausd.net</a> or (213)241-1278, or Anne-Marie Gauto, LD Central Specialist at <a href="mailto:anne.gauto@lausd.net">anne.gauto@lausd.net</a> or (213)407-6603.</p>	<p><a href="#">Wellness Talks-Carver MS</a></p> <p><a href="#">Mental Health America Toolkit 2021</a></p> <p><a href="#">Mental Health Matters Toolkit 2021</a></p> <div data-bbox="1410 600 1787 966">  </div>

# PUPIL SERVICES & ATTENDANCE

**Rafael Rubalcava**, Interim PSA Field Coordinator

Updates/Events/News:	Links:
<p><b>Home Visits</b></p> <p>Home visits, when necessary, will continue with the health and safety protocols including maintaining physical distance and confidentiality when appropriate.</p> <p>SHHS personnel shall continue to follow established department protocols for home visits.</p> <p>Considerations for SHHS staff who conduct home visits:</p> <ul style="list-style-type: none"> <li>○ Prior to home visit, attempt to make contact with family via phone and notify them of scheduled home visit</li> <li>○ Conduct visit practicing socially distant guidelines (stay outdoors, do not enter any residence);</li> <li>○ Knock on the door and then stand at least six feet away, if contact with family must be made;</li> <li>○ Carry a pre-printed note indicating the name of their school and contact information for the parent to communicate with staff and can leave the note at the door in lieu of making personal contact;</li> <li>○ Wear a face covering and carry additional masks for the parent/student in the event parent/student may not be wearing a mask;(schools have additional masks when needed)</li> <li>○ Avoid engaging in any contact with any individual who does not wear a mask;</li> <li>○ Not complete a home visit if, upon arrival, it appears that the residence could pose an increased risk of exposure (such as a densely populated multi-unit building or housing development with numerous people outside or in courtyards)</li> </ul>	

Updates/Events/News:	Links:	
<p>Annually, Student Support Programs holds a Pathways to College Graduation Event to celebrate our graduating students in foster care. At the event, we give away laptops through drawings. We now have 9 laptops donated, and are continuing to collect laptops and/or funds to go towards purchasing laptops for the fun event! Last year, we were able to collect 23 laptops and 80 students participated in the give away. Please consider donating a new laptop to our SSP initiative. Help prepare our foster youth for post-secondary education by donating a laptop!</p>	<p>Deadline: May 31</p>	<p><a href="https://drive.google.com/file/d/1LwtyO6_YttL1CFukvA-pSu8R4F5GJkDh/view?usp=sharing">https://drive.google.com/file/d/1LwtyO6_YttL1CFukvA-pSu8R4F5GJkDh/view?usp=sharing</a></p> 
<p>Our SSS and A-G Counselors will be recruiting eligible students in foster care and experiencing homelessness who are rising 12th graders for the Posse Foundation Scholarship. This is a full-ride scholarship to one of the following participating universities: Bucknell University, Dickinson College, Hobart and William Smith Colleges, Kalamazoo College, Northwestern University, Pepperdine University, Tulane University, and University of Wisconsin-Madison.</p>	<p>Deadline: May 30</p>	<p><a href="https://drive.google.com/file/d/1cJv7hbX02tXcziNP0tVjEt8zPAPNyo2i/view?usp=sharing">https://drive.google.com/file/d/1cJv7hbX02tXcziNP0tVjEt8zPAPNyo2i/view?usp=sharing</a></p> 



# Welcome to LOCAL DISTRICT C

Administrators of Instruction  
Julie Gonzalez &  
Andre Spicer



Greetings Esteemed Leaders of Local District Central,

As we turn the calendar page to May, we are reminded of two special recognition events: Principal Appreciation and Teacher Appreciation! We cannot think of another year in our history where this appreciation and recognition is more deserved. Thank you for your preparation and planning for the reopening of schools in a safe and festive manner while honoring our seniors on ***College Signing and Career Celebration Day!*** We have much to celebrate and we recognize and honor our school leaders in making this all possible for our young people. [#championmentality](#)

Finally, kudos to all of our secondary schools that have increased their graduation rates for the class of 2021. Currently, LD Central has an overall rate of 82% and climbing. Please continue to provide multiple opportunities for students to recover credits, so that as many students as possible will realize the promise of a high school diploma.

In service,

Julie and Andre

# ELEMENTARY ELA

Crystal Epps, Elementary ELA Coordinator

Updates/Events/News:	Dates:	Links:
<p><b><u>Admin Office Hours</u></b> Every Tuesday 9:00-10:00 a.m.</p> <p><b><u>Teacher Professional Development</u></b> Every Tuesday 3:30-4:30 p.m. May 4th TRO Office Hours for LDC</p> <p><b><u>Teacher Office Hours</u></b> Every Thursday 3:30-4:30 p.m.</p> <p><b><u>Monthly Cadres</u></b> Thursday, May 27th from 9-11:00 a.m.</p> <p><b><u>Primary Promise Coordinator's Meeting</u></b> Wednesday, May 5th from 12-3:00 p.m.</p>	<p><b>Admin:</b> Tuesdays 9-10 a.m.</p> <p><b>Teachers:</b> Tuesdays 3:00-4:00 p.m.</p> <p><b>Teachers Office Hours:</b> Thursdays 3-4 p.m.</p> <p>May 27th @ 9 -11 am</p> <p>May 5th 12-3:00 pm</p>	<p><a href="#">Admin Zoom link</a></p> <p><a href="#">Teacher Tuesday PD Zoom link</a></p> <p><a href="#">Tuesday, iELD/ELA Zoom link</a></p> <p><a href="#">Teacher Office Hours Zoom Link</a></p> <p><a href="#">Elementary Cadre Flyer</a></p> <p><a href="#">Primary Promise Coordinator Meeting</a></p>

CONTINUED...

## Updates/Events/News:

### TRO Overview Office Hours from DOI

Join us for drop-in office hours with Amplify for information and Q&A on the TRO (Text Reading Online) assessment.

Monday, May 3, 2021 3:30 - 4:30

Wednesday, May 5, 2021, 3:30 - 4:30

Friday, May 7, 2021 3:30 - 4:30

Please register in advance on MyPLN, keywords: TRO Overview.

This is a voluntary, unpaid opportunity.

### IMPORTANT: UPDATED ORTON GILLINGHAM SESSION DATES

#### Choose one session date for each synchronous session

- Session #3: 4/27, 4/28, 4/29, 4/30
- Session #4: 5/11, 5/12, 5/13, 5/14
- Session #5: 5/25, 5/26, 5/27, 5/28

**\*All session times will be from 4:30 - 6:30pm**

Session #4 will be available for MyPLN registration on May 4, and Session 5 will be available for registration on May 17.

## Links:

[TRO Job Aid](#)

[TRO FAQs](#)

[How-To Video Enabling  
\(Assigning\) TRO to Student  
Online](#)

[Clearing the Browsing Data](#)

**CONTINUED...**

Updates/Events/News:	Date	Links:
<p><b><u>Admin and Teacher Office Hours</u></b> Admin Tuesdays 12:30 to 01:30 Teachers Tuesday and Wednesdays 3:00 to 04:00</p> <p><b><u>STAR Administration Training</u></b> for schools that have NOT previously administered STAR</p> <p><b><u>SBAC Administration</u></b> for 11th graders only</p> <p><b><u>Renaissance MOY</u></b> For grades 6-10</p> <p><b><u>Renaissance Data Analysis PD</u></b></p>	<p>Resuming on May 04, 2021</p> <p>May 11, 2021</p> <p>3/9/21 - 6/10/21</p> <p>5/3/21 - 6/10/21</p> <p>Now available asynchronously</p>	<p>Admins Meeting ID: 995 1997 7822</p> <p>Passcode: 612ELA</p> <p>Teachers Meeting ID: 967 3891 8390</p> <p>Passcode: 612ELA</p> <p>Admins Meeting ID: 995 1997 7822</p> <p>Passcode: 612ELA</p> <p><a href="#">STAR Data Analysis PD</a></p>





# ELEMENTARY MATH

[Click here to return to menu](#)

Claudia Vela, Elem Coordinator & Yvonne Huang, Secondary Coordinator

LD-Central Elementary Math Schoology access code: DW428-RHCJP

Updates/Events/News:	Dates:	Links:
<p><b><u>Voluntary Office Hours</u></b> Meeting ID: 974 1318 8893 Passcode: K5MATH</p>  <p><b><u>Voluntary Cadre</u></b> Meeting ID: 974 1318 8893 Passcode: K5MATH</p> <p><b><u>Resources</u></b> LDC Math Spring 20-21 PD Toolkit Hybrid Return Library Lessons, Strategies &amp; Resources Edulastic CFA #3 Blueprints &amp; Resources TK-5/6 Edulastic PPT on Data Analysis Assessment Overview LAUSD Document PK-2 Assessment Overview LAUSD Document 3-5 LDC Edulastic Results Summary (PPT) LDC Edulastic Pivot Table Data January &amp; April State Assessment IOC</p> <p><b><u>DOI Professional Developments</u></b> Upcoming Trainings: Edulastic, Eureka, ST Math &amp; IM</p>	<p><b>Admin Monday 9-10</b> <b>Teachers Monday &amp; Tuesdays 3:30-4:30</b></p> <p><b>Math Cadre</b> May 27, 2021 12-2pm</p> <p><b>Edulastic CFA#3</b> <b>May 10th- June 10th</b> <b>(NEW)</b></p> <p><b>Link Updated weekly:</b> Copy this link to easily share with teachers upcoming trainings, resources, &amp; announcements. </p>	<p><a href="#">Elementary Math Office Hours</a> <a href="#">Zoom link for Cadre &amp; Office Hours</a> <a href="#">May Office Hours Flyer (NEW)</a></p> <p><a href="#">May Cadre Flyer (NEW)</a></p> <p><a href="#">LDC Spring 20-21 PD Toolkit</a> <a href="#">Hybrid Return Library (NEW)</a> <a href="#">Edulastic CFA #3 (including #1 &amp; #2) (NEW)</a> <a href="#">Edulastic PPT-Data Analysis</a> <a href="#">PK-2 Assessment Overview</a> <a href="#">3-5 Assessment Overview</a> <a href="#">LDC Edulastic Results Summary PPT</a> <a href="#">LDC Edulastic CFA # 1 Data Pivot Table January</a> <a href="#">LDC Edulastic CFA#2 Data Pivot Table April (NEW)</a> <a href="#">IOC (NEW)</a></p> <p><a href="#">Math Training Flyers &amp; Announcements</a></p>

**CONTINUED...**



# SECONDARY MATH

Claudia Vela, Elem Coordinator & Yvonne Huang, Secondary Coordinator



Updates/Events/News:	Dates:	Links:
<p><b><u>Hybrid Return Library Lessons, Strategies &amp; Resources</u></b></p> <p><b><u>Assessment Overview 6-11th Grade</u></b> Renaissance Test Administration Overview Support</p> <p><b><u>Local District Central Math Spring Tool Kit (3 Modules)</u></b> Kit includes 3 paths for Math Teachers, Dept Chairs, and Site Admin to guide Math instruction for Spring Semester</p> <p><b><u>Voluntary Office Hours</u></b> <b>Secondary Math Office Hours</b> Open QA Session</p> <p><b><u>Voluntary Monthly Cadres</u></b> Please register to receive zoom info.</p> <p><b><u>DOI Professional Developments</u></b> Free Series for Secondary Math Teachers - Hidden Statistics Workshops</p> <p><b>LAUSD Renaissance Star Reading &amp; Math Folder</b> Renaissance STAR Math Testing <b>EOY</b> Window Pre-Recorded Webinars on Data &amp; Test Administration</p>	<p>Ongoing</p> <p>3/9/21 - 6/10/21 Tuesday, May 11 @ 12:30-1:30 pm</p> <p>Ongoing</p> <p><b>Admin:</b> Mondays 1-2 pm <b>Teachers:</b> Mondays 3-4 pm <b>Teachers:</b> Tuesday 8-9 am</p> <p>Thursday, May 27 @ 9 - 11 am</p> <p>Please click on the links for more details</p> <p><b>EOY:</b> May 3 - June 10</p>	<p><a href="#">Hybrid Return Library</a></p> <p><a href="#">LAUSD Assessment Overview Zoom Link</a></p> <p><a href="#">LD Central Spring Math Tool Kit</a></p> <p><a href="#">Secondary Math Office Hour Flyer</a></p> <p><a href="#">Secondary Math Cadre Flyer</a> <a href="#">Secondary Math Cadre Registration</a></p> <p><a href="#">UCLA MP Hidden Statistics Workshop</a></p> <p><a href="#">DOI Renaissance Resource Folder</a></p>



# ENGLISH LEARNERS

Juana Anguiano, Elem Coord & Wendoly Alvarez, Secondary Coord  
Yadhira Hernandez, K-12 EL Coordinator, Instruction and Compliance

Updates/Events/News:	Dates:	Links:
<p><b><u>Rosetta Stone for English Learners and Dual Language Learners</u></b> The purpose of Rosetta Stone is to provide an equitable supplemental language resource that can be used as an asynchronous assignment during dELD. It's available to all English Learners as well as all Dual Language Education students.</p> <p><b><u>ELD Resources for iELD and dELD</u></b> Each document has ELD resources to support instruction in iELD and dELD.</p> <p><b><u>ELPAC Testing Strategies</u></b> Strategic Planning and Testing Strategies for the ELPAC Summative Test to support ELs in Reclassifying.</p>		<p><a href="#">Click here for Rosetta Stone Getting Started Guide</a></p> <p><a href="#">Elementary ELD Resources</a></p> <p><a href="#">Secondary ELD Resources</a></p> <p><a href="#">Click here for support slides</a></p>

CONTINUED...



# DUAL LANGUAGE

Cristina Rodriguez, Dual Language Coordinator



Updates/Events/News:	Dates:	Links:
<b>Dual Language Office Hours</b> (Weekly) <ul style="list-style-type: none"> <li><b>Administrators/Instructional Team Members</b></li> </ul>	Thurs. @ 1:30-2:30 p.m.	<a href="https://zoom.us/j/956296178">https://zoom.us/j/956296178</a> Passcode Idcdual
<b>Dual Language Workshops and Office Hours</b> (Weekly) <ul style="list-style-type: none"> <li><b>Teachers</b></li> </ul>	Wed.@ 2:45-3:30 p.m.	<a href="https://zoom.us/j/956296178">https://zoom.us/j/956296178</a> Passcode Idcdual
<b>Pathway to Biliteracy</b> EXTENDED Submission (Gr.5 Elementary & Gr.8 Middle School Bilingual Students)	<b>Due May 20</b>	<a href="#">Pathway to Biliteracy Submission-LINK</a>
<b>SEAL of Biliteracy 2021-CDE &amp; LA Unified Submissions</b> Enter all Gr. 12 students awards in MiSiS <b>PRIOR</b> to submitting the form to MMED using provided link	<b>Due May 3</b>	<a href="#">SEAL of Biliteracy CDE &amp; LA Unified Submission Link</a>
<b>Elementary DLE Sample Schedules and Instructional Tips for Return to Campus</b>	N/A	<a href="#">DLE Sample Schedules-Hybrid Models</a>
<b>Elementary Target Language Proficiency Overview- -Online module</b>	On-going	<a href="#">TLP Online Module FLYER</a>

CONTINUED...



# DUAL LANGUAGE

Cristina Rodriguez, Dual Language Coordinator



Updates/Events/News:	Dates:	Links:
<b>World Languages Standards Roll-Out PD (Selected High Schools)</b>	05.08.21	<a href="#">WL Standards Roll-Out PD Series</a>
<b>Rosetta Stone Office Hours</b>	May 4, 11, 18, & 24	<a href="#">Rosetta Stone-FLYER</a>
<b>SEMINARIOS DE FORMACIÓN DE PROFESORES DE ESPAÑOL (ONLINE) Spring Semester</b>	May 22 (Last session)	<a href="#">Flyer-Seminarios Maestros de Español</a>
<b>LATE CHOICES Application</b>	On-Going	<a href="http://www.GoTo.LAUSD.net">www.GoTo.LAUSD.net</a>
<b>Workshops for Teachers of Spanish (Free)- sponsored by Office of Education of Embassy of Spain</b>	May 5 & 8	<a href="#">Webinarios de Formación de Profesorado-FLYER</a>
<b>Los Angeles Public Library <u>Bilingual Book Club</u>-Gr. 5-10</b>	Every Tuesday until June 29	<a href="#">LA Public Library-Bilingual Book Club FLYER</a>  <a href="#">Link to Register</a>

# DATA

David Gonzalez, Data Coordinator

Updates/Events/News:	Links:
<p style="text-align: center;"><u><a href="#">End of Year Tests</a></u></p> <ul style="list-style-type: none"> <li>• Use of local assessments in Grades 3-8</li> <li>• Use of CAASPP in Grade 11 (for EAP)</li> <li>• ELPAC assessment window extension</li> </ul> <p><u>For 11th Grade:</u> These videos are a MUST see for remote test administration. Select Videos and Quick Reference Guides on the menu.</p> <p>All other grades continue with locally planned assessments as listed in the LCAP.</p> <p style="text-align: center;"><u><a href="#">Student Testing Branch Zoom Office Hours</a></u></p> <p style="text-align: center;">Feel free to jump into STB Office Hours</p> <p style="text-align: center;">M-F 3-4 PM</p>	<p>See email from Superintendent Baez</p> <p><a href="https://ca-toms-help.ets.org/spring-21-educators/">https://ca-toms-help.ets.org/spring-21-educators/</a></p> <p><a href="#">Link Here</a></p>

# SCIENCE/STEAM

Ana-Maria Madero, STEAM Coordinator

Updates/Events/News:	Dates:	Links:
<b>Virtual Field Trips:</b> Virtual field trips allow us to take our students where the bus can't. Here are 25 field trips and activities.	N/A	<a href="#">Virtual Field Trips</a>
<b>FOSS Science Obsolete Materials:</b> Your school can distribute old FOSS materials to students, save them for future use or return obsolete items to the LAUSD Science Center (see bulletin)	N/A	<a href="#">Bulletin</a>
<b>FOSS PD:</b> Our life science Hybrid sessions are now available for registration on MyPLN. Please share the information with your teachers	Various dates	Register on MyPLN <a href="#">Dates and Times</a> MyPLN: <a href="#">FOSS Hybrid</a>
<b>New Elementary Science PDs:</b> To support Hybrid Learning in upcoming units, at grade level! Teachers can register on MyPLN using one of the following search terms or by signing in to MyPLN and clicking the link to the right	Various dates	<a href="#">Amplify Hybrid</a>  <a href="#">FOSS Hybrid</a>

CONTINUED...



# SCIENCE/STEAM

Ana-Maria Madero, STEAM Coordinator

Updates/Events/News:	Dates:	Links:
<b>Science/STEAM Office Hours:</b> Administrators - Thursdays 10-11am Teachers - Tuesdays and Thursdays 3:30-4:30 pm	Administrators - Thursdays 10-11am  Teachers - Tuesdays and Thursdays 3:30-4:30 pm	<b>Zoom Administrators:</b> <a href="https://lausd.zoom.us/j/83810069609">https://lausd.zoom.us/j/83810069609</a>  <b>Zoom Teachers:</b> Tuesdays: <a href="https://lausd.zoom.us/j/85978071574">https://lausd.zoom.us/j/85978071574</a> Thursdays: <a href="https://lausd.zoom.us/j/89227048290">https://lausd.zoom.us/j/89227048290</a>
<b>Science Secondary PD:</b> Effective Tech Tools for Science	N/A	<a href="#">Link to database</a>

CONTINUED...

Updates/Events/News:	Dates:	Links:
<p><b>Planning Sessions for Middle School Science Teachers</b></p> <p>The Division of Instruction is extending the offering for curriculum planning sessions for middle school science teachers to plan collaboratively with other teachers from across the District. The remaining sessions are scheduled, as follows:</p> <ul style="list-style-type: none"> <li>Thursday, May 6 from 3:00 p.m.-5:00 p.m.</li> <li>Thursday, May 20 from 3:00 p.m.-5:00 p.m.</li> </ul> <p>Teachers will be grouped into grade-level alike and publisher-alike teams.</p> <p>Teachers will receive compensation at \$25/hr. training rate. participating teachers are seeing great values in these sessions. Please consider participating and bring your colleagues with you.</p> <p>Please encourage the science teachers from your school to register!</p>	<p>May 6 May 20</p>	<p>Registration is required on <a href="#">MyPLN</a>. Please use the keywords <b>Planning Sessions for Middle School Science</b>.</p>



## Ana-Maria Madero, STEAM Coordinator



Updates/Events/News:	Dates:	Links:
<p>This summer, USC Viterbi K-12 STEM Center, will offer two summer programs for students. All programs are FREE to students on free or reduced lunch.</p> <ul style="list-style-type: none"> <li> <b>Northrop Grumman Summer Engineering Camp</b> (<a href="https://viterbi.k12.usc.edu/camp/">https://viterbi.k12.usc.edu/camp/</a>): two-week commuter or virtual camp to expose students from low socioeconomic backgrounds to engineering disciplines through applied science and math. This camp targets <u>current 5<sup>th</sup>, 6<sup>th</sup>, and 7<sup>th</sup> grade students</u> who have an interest in STEM. The deadline for the online application and teacher recommendation is May 31. Flyers and more details are at the link above. </li> <li> <b>Energy of STEM</b> (<a href="https://viterbi.k12.usc.edu/stemenergy/">https://viterbi.k12.usc.edu/stemenergy/</a>): one-week virtual camp for students from low socioeconomic backgrounds to explore green energy (elementary) or electronics (high school). This program targets <u>elementary</u> and <u>high school</u> students who have an interest in green energy or electronics. The deadline for application materials is May 14; please see the above link for more details. </li> </ul> <p>Please share this great opportunity with your teachers and students. Please also feel free to share this opportunity with your colleagues at other schools.</p>	<p>May 31</p> <p>May 14</p>	



# COUNSELING/A-G

Carmela Bravo, Counseling Coordinator & Jonique Burton, A-G Coordinator



Updates/Events/News:	Dates:	Links:
<b>Cap and Gown Info:</b> Reference Guide 6484.7 2021 Graduation Caps, Tassels and Gowns.		<a href="https://drive.google.com/file/d/1soCMmLnAKnEyof4gRaF0wNaeUllUg1wh/view?usp=sharing">https://drive.google.com/file/d/1soCMmLnAKnEyof4gRaF0wNaeUllUg1wh/view?usp=sharing</a>
<b>Year - End Coding of 12th Grade Students</b>	June	<a href="https://drive.google.com/file/d/1M8uDHUcGN_CbGoS87RIUd8fs7A3mF1-K/view?usp=sharing">https://drive.google.com/file/d/1M8uDHUcGN_CbGoS87RIUd8fs7A3mF1-K/view?usp=sharing</a>
<b><u>Non-Optional Intervention Office Hour</u></b> 2:45 - 3:45 p.m.	Tuesday	<a href="https://lausd.zoom.us/j/85327686669?pwd=MGFNSEQyN2ROaCtCb1c2Q3pFTWQ5QT09">https://lausd.zoom.us/j/85327686669?pwd=MGFNSEQyN2ROaCtCb1c2Q3pFTWQ5QT09</a> Meeting ID: 853 2768 6669
<b><u>Counseling Admin Session Office Hour</u></b> 1:00 - 2:00 p.m.	Monday	Passcode: LDC <a href="https://lausd.zoom.us/j/99235656617?pwd=WUUiOUxycUJ0czZpa1J6UHJEcnpxUT09">https://lausd.zoom.us/j/99235656617?pwd=WUUiOUxycUJ0czZpa1J6UHJEcnpxUT09</a> Meeting ID: 992 3565 6617 Passcode: Counseling
<b>IOC: Graduation/Culmination Guidelines</b>		<a href="https://drive.google.com/file/d/1wpLS0IPHWLdjwV-XwHw2qz-DYOzEI8I_/view?usp=sharing">https://drive.google.com/file/d/1wpLS0IPHWLdjwV-XwHw2qz-DYOzEI8I_/view?usp=sharing</a>  <b>CONTINUED...</b>

# COUNSELING/A-G

Carmela Bravo, Counseling Coordinator & Jonique Burton, A-G Coordinator

Updates/Events/News:	Dates	Links:
<p>Per the Instructional Handbook, the Incomplete process and form 34-H-20 are referenced. The newly revised forms are attached and can also be found in the Principal's Connection.</p>		<p><a href="#">Marking Practices and Procedures in Secondary Schools</a></p> <p><a href="#">Incomplete Mark Form (English)</a></p> <p><a href="#">Incomplete Mark Form (Spanish)</a></p>
<p><b>From the Division of Instruction:</b></p> <p><b>FAFSA/ CADAA Weekly Updates - Local District Central</b></p>	<p>As of 4/25/2021</p>	<p><a href="https://docs.google.com/spreadsheets/d/1Glv6HZBYlyXcFNjcm1NkmFlo9_kuhWezr9P8HoVEKY8/edit?usp=sharing">https://docs.google.com/spreadsheets/d/1Glv6HZBYlyXcFNjcm1NkmFlo9_kuhWezr9P8HoVEKY8/edit?usp=sharing</a></p>
<p><b>Class Size Table:</b></p> <p>The Class Size Table for 2021-2022 has been posted to the SFS.lausd.net website. I have also attached the Class Size Form for your convenience.</p>		<p><a href="https://drive.google.com/file/d/1GP_r08Zes-vYK60ktPFBkTzB8Ulg1CnWI/view?usp=sharing">https://drive.google.com/file/d/1GP_r08Zes-vYK60ktPFBkTzB8Ulg1CnWI/view?usp=sharing</a></p> <p><b>CONTINUED...</b></p>



# COUNSELING/A-G

Carmela Bravo, Counseling Coordinator & Jonique Burton, A-G Coordinator



## Updates/Events/News:

### FAFSA/ Cal State LA

If you have a student who has applied to **Cal State LA** and could not utilize the IRS data retrieval electronically with FAFSA, this student must submit an additional form to Cal State LA. The form is called the Dependent Verification Worksheet. This form must be submitted with a paper copy of the students' parents tax documents. The student will not receive financial aid without this additional information. Please click on the link for the additional form.

## Dates:

Friday, April  
30, 2021

## Links:

[https://drive.google.com/file/d/1IL\\_X1zQNDYixnkW66xd3YhVYgzMevuT/view?usp=sharing](https://drive.google.com/file/d/1IL_X1zQNDYixnkW66xd3YhVYgzMevuT/view?usp=sharing)

CONTINUED...

# COUNSELING/A-G

Carmela Bravo, Counseling Coordinator & Jonique Burton, A-G Coordinator

Updates/Events/News:	Dates:	Links:
<p><b><u>Edgenuity - May</u></b></p> <p>Edgenuity will offer Spring Booster Modules. These modules will include customization tools and an overview of features. Please click on the link to register for these modules.</p>		<p><a href="https://drive.google.com/file/d/1GYJqN_eOoMLtASPJAWpxySrgNK-hvYx/view?usp=sharing">https://drive.google.com/file/d/1GYJqN_eOoMLtASPJAWpxySrgNK-hvYx/view?usp=sharing</a></p>

CONTINUED...



# COUNSELING/A-G

Carmela Bravo, Counseling Coordinator & Jonique Burton, A-G Coordinator



## Updates/Events/News:

## Links:

### CAFÉ Series Offerings (REPEAT):

- Teachers and counselors, come join the A-G Intervention and Support team for our new series of college access workshops!
- SPRING Series:  
MyPLN keywords “2021 Spring CAFÉ”  
**June 22, 23 & 24** (8:30 to 2:00 pm)  
Participants can receive training rate or apply for up to two salary points (extra homework required)

MyPLN keywords “2021 Spring CAFÉ”

Participants can receive training rate or apply for up to two salary points (extra homework required)

CONTINUED...



# COUNSELING/A-G

Carmela Bravo, Counseling Coordinator & Jonique Burton, A-G Coordinator

Updates/Events/News:	Dates:	Links:
<p><b><u>Naviance News (REPEAT)</u></b></p> <ul style="list-style-type: none"> <li> <b>Senior Tech Survey (Job Aid: Senior Tech Survey)</b>  <b>This survey is still open, encourage seniors to complete.</b>            Senior Tech Survey in Naviance will remain open until June; this survey assesses tech needs of our seniors after graduation.         </li> <li> <b>Senior Exit Survey &amp; College &amp; Career Readiness Survey</b> <ul style="list-style-type: none"> <li>- ODA and A-G will be issuing the IOC and flyer/guide</li> <li>- Senior Exit and College &amp; Career Readiness Surveys will both open on May 1st and conclude on June 11th (NEW !!!!)</li> </ul> </li> </ul>		<p><a href="#">LAUSD_JobAid_Senior Tech Survey Class of 2021.pdf</a></p>

**CONTINUED...**

# COUNSELING/A-G

Carmela Bravo, Counseling Coordinator & Jonique Burton, A-G Coordinator

Updates/Events/News:	Dates:	Links:
<p><b><u>IXL - May</u></b> If your school uses IXL, here are links of supports offered.</p> <ul style="list-style-type: none"> <li>• The first flyer is the LAUSD Support flyer: this outlines all the different types of support we offer for our LAUSD partnership, including links. <ul style="list-style-type: none"> <li>◦ <a href="#">Here</a> is the PD request form</li> <li>◦ <a href="#">Here</a> is the link for one-on-one coaching</li> </ul> </li> <li>• The second flyer is the <b>May</b> webinar series flyer: These PDs were designed to be applicable and relevant for all teachers, regardless of grade level, content, or if they are in person, virtual, or hybrid. Hopefully, the times have been adjusted to accommodate the new schedules.</li> </ul>		<p><a href="#">LAUSD Support (2) (1).pdf</a></p> <p><a href="#">IXL May Webinar Series (1).pdf</a></p>

# TITLE 1

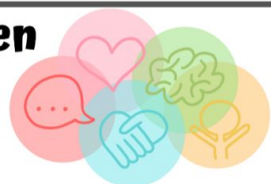
Marty Barrios & Oscar Salas, Title 1 Coordinators

[Click here to return to menu](#)

Updates/Events/News:	Dates:	Links:
<p><b><u>2021-2022 SPSAs</u></b> The 2021-2022 SPSAs will be reviewed by LD Central Staff April and May, with a tentative Board approval by June. All SPSAs will be noted "Revision Required" until a final approval is obtained.</p> <p><b><u>Title I Purchase of SIM and SLM</u></b> May 5th is the deadline to create a PO on the shopping cart on SAP for Supplemental Instructional Materials (SIM) and Software License Maintenance (SLM).</p> <p><b><u>LD Central Title I Designee Meeting</u></b> May 20 is the final Title I Designee Zoom Meeting for the year. A draft agenda will be posted.</p> <p><b><u>2020-2021 Title I BAR and SPSA Modification</u></b> Deadline to submit a Title I BAR and SPSA Modification for salaries is May 28th (Teacher X-Time [Tutor and/or Non-Tutor], Certificated and/or Classified Training Rate, Coordinator X-Time, Counselor X-Time, TA Relief).</p> <p><b><u>Time and Effort Administrator Assurances</u></b> Second Semester Administrator Assurances is due on or before June 30.</p>	<p>April-May</p> <p>May 5</p> <p>May 20</p> <p>May 28</p> <p>June 30</p>	<p><b>LD Central Schoology Course</b> <a href="https://lms.lausd.net/course/2586593909/materials">https://lms.lausd.net/course/2586593909/materials</a></p> <p><b>Access Code:</b> <b>XCG4-6J28-7D9PD</b></p> <p><b>Title I Purchase of Technology</b> (For schools with approved POs on the shopping cart) Please contact the vendor to get a confirmation delivery of on or before June 30. <b>Goods Receipt must be done on or before June 30.</b> Technology delivered after June 30 will incur a payback with Gen Ed funds in the next school year.</p>

# KINDERGARTEN READINESS

Christina Ramaya, Kindergarten Readiness Specialist

Updates/Events/News:	Dates:	Links:
<p><b>First Ever: Bright Beginnings! Kindergarten Readiness Conference</b></p> <p>Administrators, Kindergarten Teachers, &amp; Teachers at EECs are welcome to attend a conference just for supporting young learners. Participants must be from Cohorts 1, 2, or 3 Grant participating schools.</p> <ul style="list-style-type: none"> <li>Topics include: <ul style="list-style-type: none"> <li>Supporting students in Hybrid and Remote learning</li> <li>* Social and Emotional Learning *</li> <li>* Literacy Skills * Mathematics * Physical Health and Well-Being</li> </ul> </li> <li>Pre-Registration available on MyPLN <ul style="list-style-type: none"> <li>Attendees paid at hourly rate</li> <li>Extra-duty form required for administrators</li> </ul> </li> </ul>	<p><b>Saturday May 15</b></p> <p><b>9:00 am – 12:00 pm</b></p>	<p><a href="#">Event Flyer Linked Here</a> – Please distribute to EEC and Kindergarten teachers at K-Readiness participating schools!</p> <div data-bbox="1271 704 1806 928">  <p><b>Kindergarten Readiness Program</b></p> <p>Los Angeles Unified School District - Local District Central</p> </div>

# KINDERGARTEN READINESS

Christina Ramaya, Kindergarten Readiness Specialist

[Flyer](#)



Please join us for our  
Quarterly Articulation  
Meetings

**NEW TIME**  
**4:30p.m. - 6:30p.m.**  
**Sign up on MyPLN**  
**Keywords: EDI Central**

Check out [Need to Know](#)  
for additional EDI information.

For a list of schools by Community of  
Schools and to see your Instructional  
Coach/PSW team, please click [here](#).

#### LD CENTRAL K-READINESS TEAM

Christina Ramaya Specialist  
christina.ramaya@lausd.net

Senisa Austin Instructional Coach  
Sarah Concepcion PSW

Marisol Castro Instructional Coach  
Wendy Coreas PSW

Patricia Leon Instructional Coach  
Anita Yousoofian PSW



## Local District Central K-Readiness Articulation Meetings (EDI Cohort 2 Schools)

EDI school teams\* come together with early education staff, PSWs, coaches, parent representatives, and community organizations to build a professional learning community focused on supporting our youngest learners.

\*School teams consist of all kindergarten teachers, 2 EEC teachers per EEC, and principals. Learning is cumulative and team members should plan on attending all four meetings.

Teachers will be paid their hourly rate for attendance (2 hours).

### Eagle Rock/Highland Park

September 21, 2020  
February 2, 2021

**NEW DATES: May 5 or 6, 2021**

### Glassell Park/Los Feliz, Koreatown/Mid City

September 23, 2020  
February 4, 2021

**NEW DATES: May 5 or 6, 2021**

### Manual Arts/Vermont Square Downtown/MacArthur Park

September 30, 2020  
February 9, 2021  
May 5, 2021

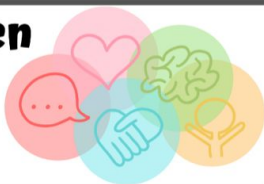
### Jefferson/South Central

October 1, 2020  
February 11, 2021  
May 6, 2020




# KINDERGARTEN READINESS

Christina Ramaya, Kindergarten Readiness Specialist

Updates/Events/News:	Dates:	Links:
<p><b>Kindergarten Readiness Professional Learning Series</b></p> <p>Join the Kindergarten Readiness Team as we engage in a research-based professional learning series focused on supporting transitions back to school. Our work will be connected to the domains of the Early Development Instrument (EDI).</p> <p>Topics will include:</p> <ul style="list-style-type: none"> <li>• Routines and strategies for engaging students across content areas</li> <li>• Latest research on hybrid learning and social-emotional development</li> </ul> <p>Kindergarten Teachers from EDI Cohorts 1, 2, or 3 Grant participating schools can apply.</p> <ul style="list-style-type: none"> <li>• Space limited to 50 teachers in Local District Central <ul style="list-style-type: none"> <li>○ Four sessions (either Tuesdays or Wednesdays)</li> <li>○ 4:30– 5:30 p.m.</li> <li>○ Teachers paid at hourly rate for participation</li> <li>○ Must be able to attend all four sessions</li> </ul> </li> </ul>	<p>4 Sessions (Tuesdays OR Wednesdays)</p> <div data-bbox="993 546 1275 732"> <p><b>Tuesdays</b> May 11, 2021 May 18, 2021 May 25, 2021 June 1, 2021</p> </div> <div data-bbox="993 749 1271 926"> <p><b>Wednesdays</b> May 12, 2021 May 19, 2021 May 26, 2021 June 2, 2021</p> </div>	<p>For more information and application: <a href="http://bit.ly/KindergartenProfessionalLearning2021">http://bit.ly/KindergartenProfessionalLearning2021</a></p> <div data-bbox="1309 689 1837 912"> <p><b>Kindergarten Readiness Program</b></p>  <p>Los Angeles Unified School District - Local District Central</p> </div>

# KINDERGARTEN READINESS

Christina Ramaya, Kindergarten Readiness Specialist

Updates/Events/News:	Dates:	Links:
<h2 data-bbox="46 375 877 506">Local District Central Family Community Resources</h2> <p data-bbox="46 532 996 812">Local District Central hosted the Spring Virtual Family Community Resource Fair in partnership with LA Unified Wellness Programs and the Kindergarten Readiness Team. Community organizations will share resources available to families.</p> <p data-bbox="46 860 1020 995">Share these community resources such as housing, food, mental health services, and more! Please share with families!</p>	<p data-bbox="1058 375 1242 419"><b>Saturday</b></p> <p data-bbox="1078 467 1222 546"><b>April 10 2021</b></p> <p data-bbox="1052 598 1248 725"><b>Time: 10:00am – 11:30am</b></p>	<p data-bbox="1296 340 1657 373"><b>Resource Documents:</b></p> <ul data-bbox="1296 386 1875 631" style="list-style-type: none"> <li>● English: <a href="http://bit.ly/ResourceFairEnglish">http://bit.ly/ResourceFairEnglish</a></li> <li>● Spanish: <a href="http://bit.ly/ResourceFairSpanish">http://bit.ly/ResourceFairSpanish</a></li> <li>● <a href="#">Presentation Slides Copy (PDF)</a></li> </ul> <p data-bbox="1271 685 1727 718"><b>Please Share with Families!</b></p> <div data-bbox="1296 740 1875 1013">  <p>The flyer is a colorful graphic with a white background and green and yellow accents. It features the title 'Virtual Family Community Resource Fair' in English and Spanish. Below the title, it states the date 'Saturday, April 10th, 2021' and 'sábado, 10 de abril del 2021'. The bottom section displays a grid of logos for various partner organizations, including Student Health and Human Services, District Nursing Services, Healthy Start, Amarece, Women's Center, OurHouse, EPICENTER, COUNCIL FOR THE ELDERLY, and Volunteers of America. The Local District Central logo is also present at the bottom right.</p> </div>





# Kindergarten Readiness 2021 Spring Events

**Articulation  
Meetings**  
(Cohort 2 Schools)  
Dates vary by  
COS in each  
Local District:

[LD Central](#)  
[LD East](#)  
[LD South](#)  
[LD West](#)

[Kindergarten  
Teacher  
Professional  
Learning  
Series \(PLS\)](#)

4 Sessions  
Throughout  
May

[Bright  
Beginnings!  
Teacher  
Conference](#)  
(Teachers and  
Administrators)

SAVE THE DATE!  
Saturday, May 15

**Spring Family  
Conference**  
“Learning  
Through Play”  
(Parents and  
Caregivers)

SAVE THE DATE!  
Saturday, May 22



**Questions? Contact your Local District  
Kindergarten Readiness Specialist**

- Christina Ramaya, LD Central  
[christina.ramaya@lausd.net](mailto:christina.ramaya@lausd.net)
- Carrie Ann Berger, LD East  
[carrie.berger@lausd.net](mailto:carrie.berger@lausd.net)
- Traci Ausby, LD West  
[traci.ausby@lausd.net](mailto:traci.ausby@lausd.net)
- Robin Wynne-Davis, LD South  
[raw9786@lausd.net](mailto:raw9786@lausd.net)

Click on each  
box to see the  
details of  
the events.


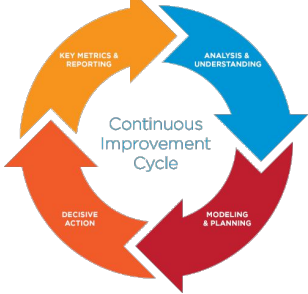
Don't miss  
these upcoming  
events and  
opportunities!

Hourly rate applies to Articulation Meetings, PLS, and Bright Beginnings!



# SCHOOL SUPPORT

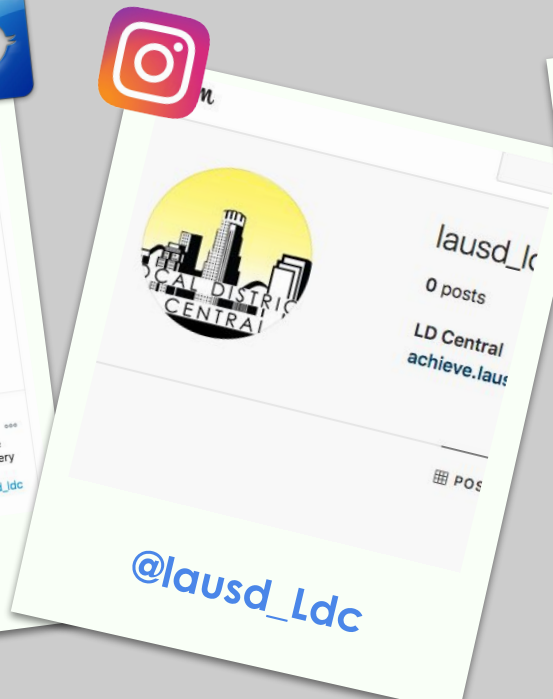
Veronica Herrera, Transformation Director

Updates/Events/News:	Dates:	Links:
<p><b><u>Admin and School Support Office Hours</u></b>  <b>Tuesdays, Thursday 11:30-12:30</b>  <b>Bring your questions re: ATSI,CSI cycle of improvement</b>  <b>And upcoming meeting</b></p> <p><b>Schoology Resources: Access Code</b></p> <p><b>All CSI and ATSI Template for PPT</b></p> 	<p>Every Tuesday and Thursday</p> <p>On going</p> <p>Meetings for April are on going</p>	 <p><a href="#">Zoom Link</a></p> <p><a href="#">Schoology Achievement Network</a></p> <p><a href="#">Template Google Deck</a></p>

Updates/Events/News:	Dates:	Links:
<p>CAEMI Math Professional Development - Professional Noticing Date: May 11, 2021 and May 13, 2021 Time: 4:00 pm – 5:30 pm</p> <p>Please encourage your EEC and CSPP teachers to join the <b>Local District Central Early Childhood Educators - Schoology group.</b></p> <p><b>Access Code</b></p> <p>49KR-742C-BFJ48</p> <p>Kindergarten Readiness Articulation Meetings for teachers and administrators will start next week! The registration for Articulation Meetings is open on MyPLN.</p> <p>Dr. Dean Tagawa will be opening as the keynote speaker for our first ever "Bright Beginnings! Kindergarten Readiness Teacher Conference"!</p>	<p>5/11/21</p> <p>5/18/21</p>	<p>Register on My PLN Keyword: CAEMI MATH</p> <p>*Professional development for center based EEC teachers only – training rate *not CSPP/ETK Teachers</p> <p><a href="http://bit.ly/KReadySpring2021">http://bit.ly/KReadySpring2021</a></p>

# Welcome to LOCAL DISTRICT C

Follow & tag us with all of your events and news!



Click here to  
return to menu